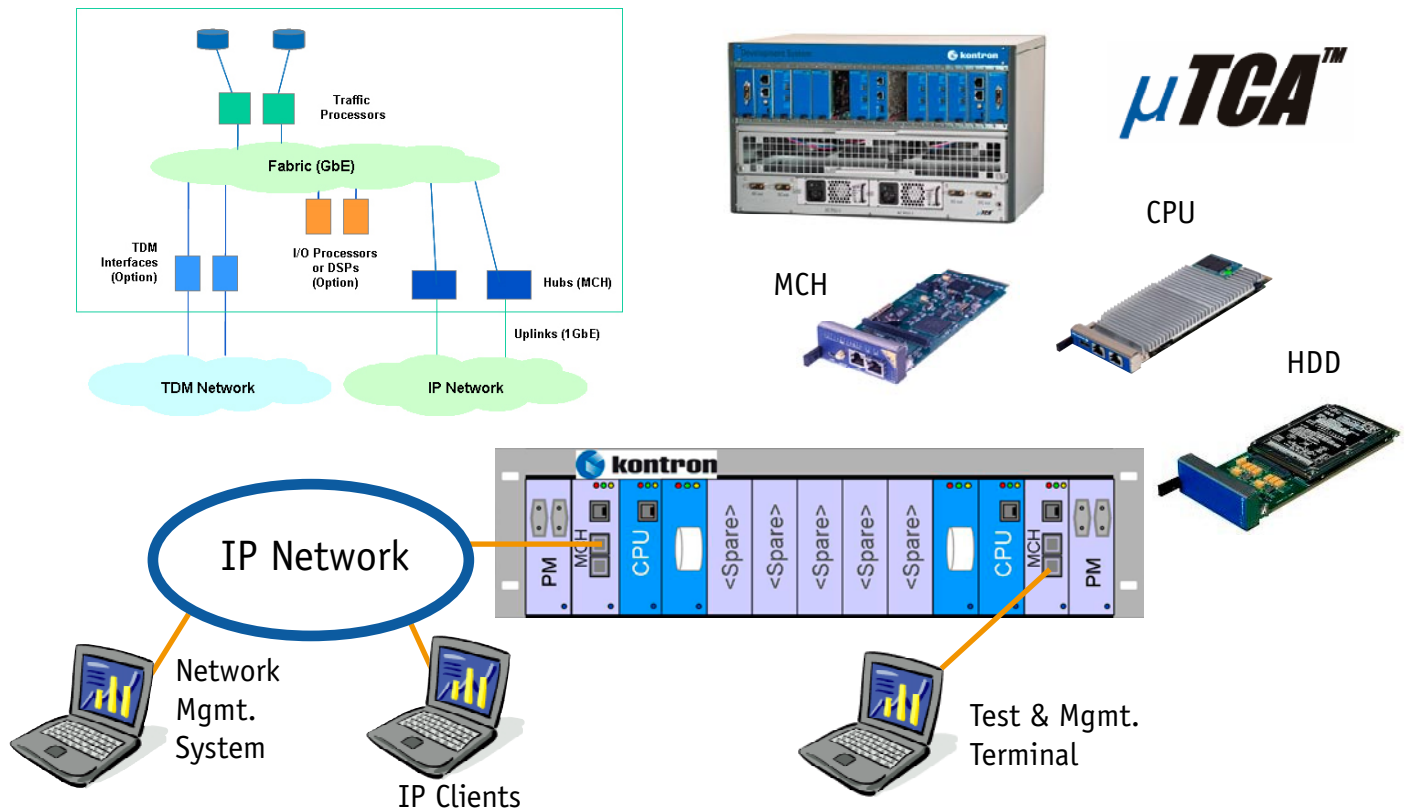


➤ XL4004

MicroTCA Multiprocessor Development System



- Entry-level systems for telecommunications, facility control, process control, image processing, wire-speed media processing, video surveillance
- Well suited for multiprocessor systems with high processing power @ low latency
- Standardized pre-configured and tested systems to speed up developments and validation
- Based on Schroff 19" MicroTCA Chassis incl. Power Supplies, Power-Feed-Through Modules and Cabling
- Backplane allows flexible use of AMCs (8 Full Size, 4 Half-Size, PCIe & SATA Point to point).
- Ethernet fabric (dual star) allows redundant configurations

- Systems architecture:
 - 2 redundant processor AMCs with storage AMCs
 - Redundant MCH configuration (2x MCH)
- Options for extension:
 - I/O or processor AMCs like TDM Interfaces (Quad/8x E1/T1) for PSTN or PBX environments, DSP AMC modules for media processing
 - Non-redundant configuration with single MCH

➤ Product Description

The MicroTCA Multiprocessor Development System provides a standard configuration to validate MicroTCA for applications with high demand on processing at low latency. With processors and dual core technologies on AMC, high performance processing enters a new area of applications. With Ethernet on the backplane, MicroTCA allows compact designs for multi-processor systems. Other fabrics (SAS/SATA, PCIe) are supported as point to point connections on the backplane.

The system supports redundant configurations with high level of availability, no single point of failure and hot-swappable components. The standard configuration has been integrated and tested and is ready to speed up developments with MicroTCA. Kontron provides support for lab validation for its customers. The standard configuration contains two PrAMCs with SATA disks for traffic processors, and two MCH in redundant configuration to provide Ethernet connectivity on the backplane as well as front panel uplinks for the system. Options for extension include TDM interfaces on AMC, DSPs on AMC, PowerPC based PrAMCs, as well as non-redundant configurations with only one MCH.

➤ Technical Specification

Hardware Features		Standard Configuration	
MCH	Freescale Coldfire 547@200 MHz DRAM 32//64 MB Flash 16/32/64 MB Supports IPMI for 12 AMC modules, 1 Cooling Unit, several Power Units AMC.0; AMC.2 (Ethernet) on MCH Fabric A Telecom clocks from AMC or external PCIe oscillator & spread spectrum ShMC IPMI compliant Front connectors for GbE, 100BT, serial, clock		MicroTCA Chassis with dual AC/DC con- verters, power feed through modules and cabling 2x NAT MCH with Ethernet fabric 2x AM4010 PrAMC, 1.5GHz, 2GB Memory 2x AM4500 SATA HDD AMC 60GB
AM4010 Processor AMC	Intel® Core™ Duo at 1.5 GHz 2GB DDR2 RAM Onboard FlashDisk PCIe x4 to backplane (AMC.1) Dual GbE to backplane (AMC.2) Dual SATA to backplane (AMC.3) OS-Support: Linux Kernel 2.6		Options AM4100 Dual Core Freescale PowerPC based PrAMC I/O or processor AMCs like Quad/8x E1/ T1 or DSP AMC (SurfRider) Single MCH configuration
AM4500 SATA HDD	60 GB	Operating System and Software Support Linux Kernel 2.6 installed ATA over Ethernet for Storage Subsystem IPMI compliant on MCH System integrated & tested	

Please note:

MicroTCA Multiprocessor Development System is targeted for laboratory use only, i.e. must not be used for deployment systems. The system is not qualified for UL.

➤ Corporate Offices

Europe, Middle East & Africa

Kontron AG
 Oskar-von-Miller-Str. 1
 85386 Eching/Munich
 Germany
 Tel.: +49 (0)8165/ 77 777
 Fax: +49 (0)8165/ 77 219
 sales@kontron.com

North America

Kontron America Corporate Office
 14118 Stowe Drive
 Poway, CA 92064-7147
 USA
 Tel.: +1 888 294 4558
 Fax: +1 858 677 0898
 sales@us.kontron.com

Asia Pacific

Kontron Asia Inc.
 4F, No. 415, Ti-Ding Blvd.
 Sec.2, NeiHu District
 Taipei Taiwan 114
 Tel.: +886-2-2799-2789
 Fax: +886-2-2799-7399
 sales@kontron.com.tw

Kontron Modular Computers GmbH

Sudetenstr. 7
 87600 Kaufbeuren
 Germany
 Tel.: +49 (0)8341/ 803-0
 Fax: +49 (0)8341/ 803-499
 sales@kontron.com